

Customer :

customer

Customer part :

customer part

Comment :

Comment

S1=2.28

S2=3.18

Tmax=464

Tp S2=503.0

PI=0.42

HI=109

Sample =1673.60

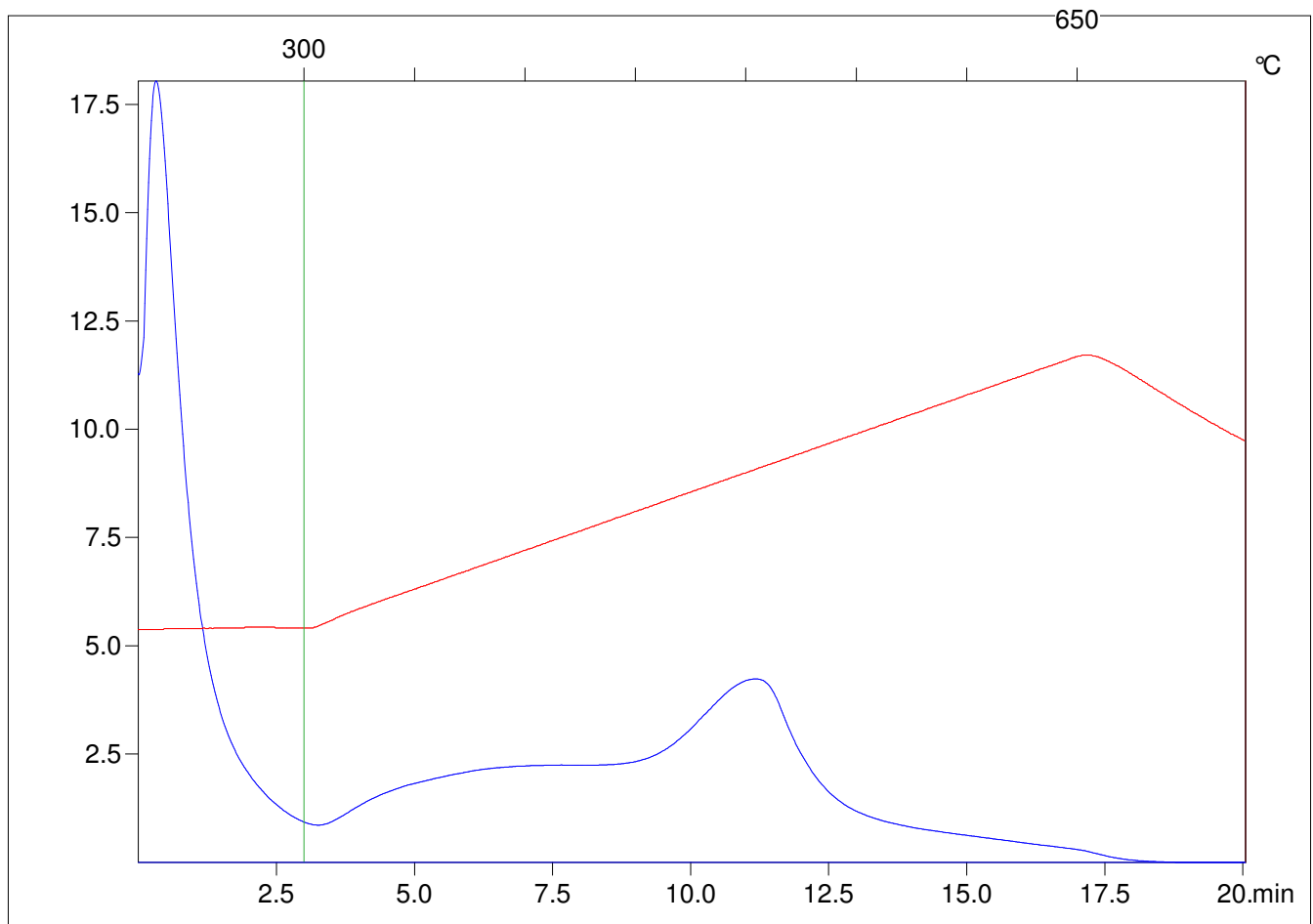
Method =Bulk Rock

Cycle=Basic

KFID(10*9)=1444

Qty =70.1

TOC=2.92



C:\VINC\PK1_1792\PK019.R00 : FID pyrolysis graphic

State

Pyro Status

Oxi Status